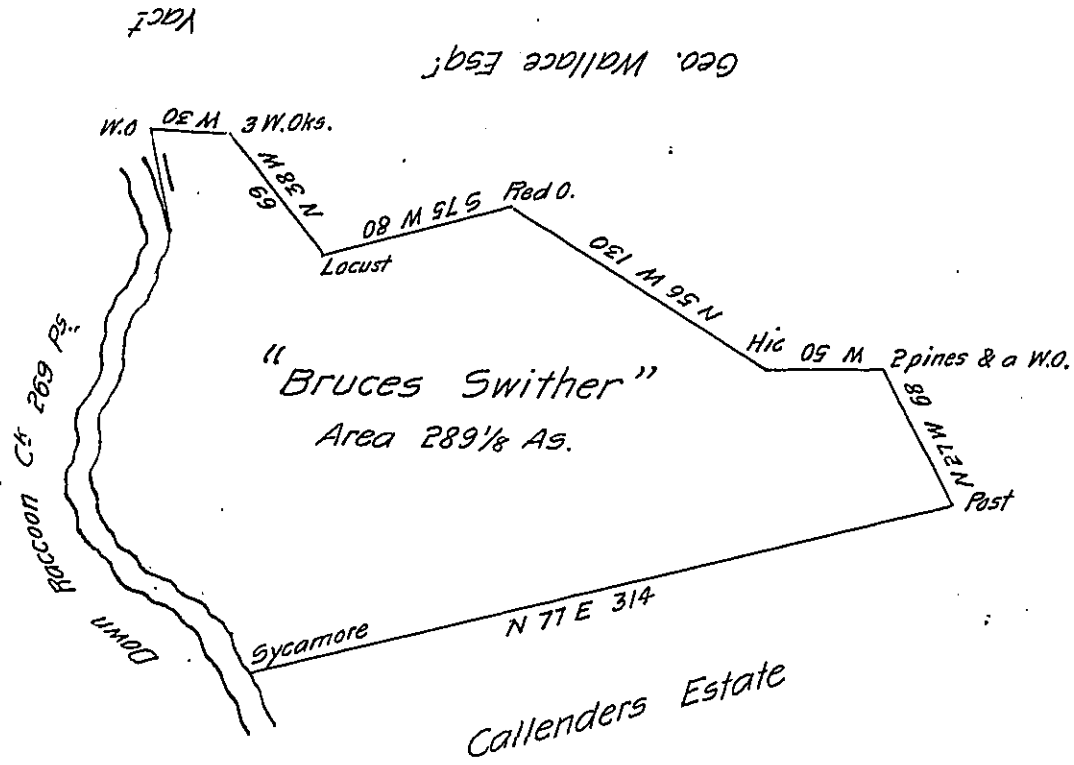


(Pg 57)

(?)  
261-176



A Draught of a Survey called "Bruces Swither" Situate on Raccoon  
 Creek in Washington County Containing 289 1/8 Acs and the usual Allow. for  
 roads &c. executed Sept<sup>r</sup> 12<sup>th</sup> 1786 in pursuance of a Warr<sup>t</sup> granted to  
 Cha<sup>s</sup> Bruce for 300 Ac<sup>s</sup> dated Feb<sup>r</sup> 10<sup>th</sup> 1780bl.

Signed

John Lukens Esq S.G.

Presley Nevill

Matt<sup>r</sup> Ritchie

D. Surv<sup>s</sup>

Returned into the Secretary's Office the 22<sup>d</sup> May 1787.

IN TESTIMONY that the above is a copy of the original remaining on file in  
 the Department of Internal Affairs of Pennsylvania, made  
 conformably to an Act of Assembly approved the 16th day of  
 February, 1833, I have hereunto set my Hand and caused  
 the Seal of said Department to be affixed at Harrisburg,  
 this fifteenth day of February 1904.

*Joseph P. ...*  
 Secretary of Internal Affairs.